



Project Partners Ltd
Consulting Engineers

Innovating with experience



BELLINZONA SBB STATION – SWITZERLAND

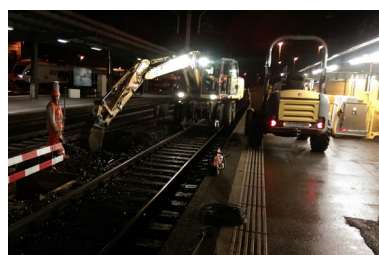
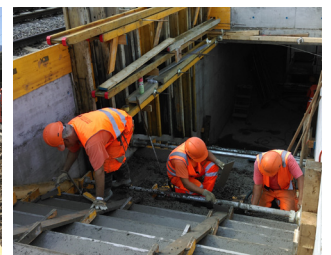


The project concerns the adaptation of the Bellinzona railway station according to the new law on disabled people (H55) between km 150,590 and km 151,125 along the 600 Arbedo–Castione – Bellinzona line. As part of the project, several interventions were carried out, including extension, modification of geometry, widening and raising of the existing sidewalks, enlargement of the existing stairway, construction of a new lift, reconstruction and demolition of existing shelters, construction of a new shelter, construction of new retaining walls, new level crossing, new water supply system for carriages and all necessary environmental mitigation works. The works were executed with railway traffic in operation, with some interventions carried out in “coup de poing” and others at night.

Client:
Swiss Federal Railways SBB
AG, Bellinzona

Cost:
19.00 Mio CHF

Period:
2013 – 2017



www.ppeng.ch

