



Project Partners Ltd
Consulting Engineers

Innovating with experience



CMI SBB ERSTFELD AND BIASCA – SWITZERLAND

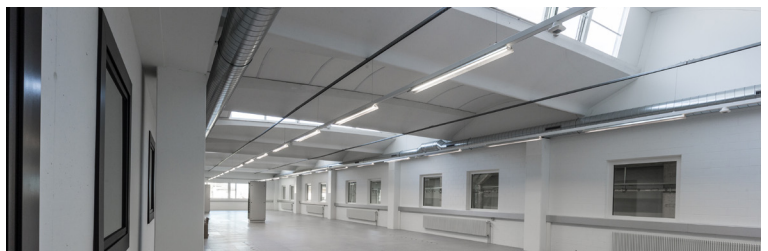
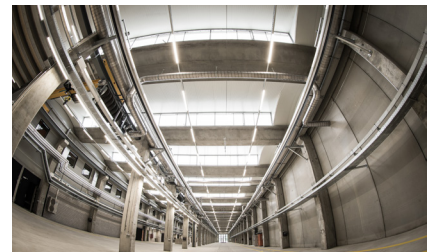
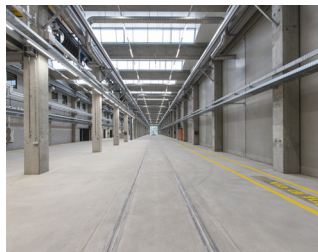


The project concerns the local construction management, liquidation and commissioning for the construction of the intervention and maintenance centres (CMI) in Biasca and Erstfeld, of the necessary infrastructures and the auxiliary construction measures. As part of the project, the main buildings with two-track workshop shed and office rooms, secondary buildings with meeting rooms, accommodation and service rooms for staff, various artefacts, covered and uncovered storage areas, access roads and aprons, loading areas with concrete floors, several infrastructures for the necessary services (water disposal, supply, cable boxes, etc.), new access and shelter tracks founded in concrete and with ballast, new fuel supply area, lighting and all necessary equipment for buildings (electrical circuit, HLKS MSRL management system).

Client:
**Swiss Federal Railways SBB
AG, Lucerne**

Cost:
83.00 Mio CHF

Period:
2014 – 2015



www.ppeng.ch

