

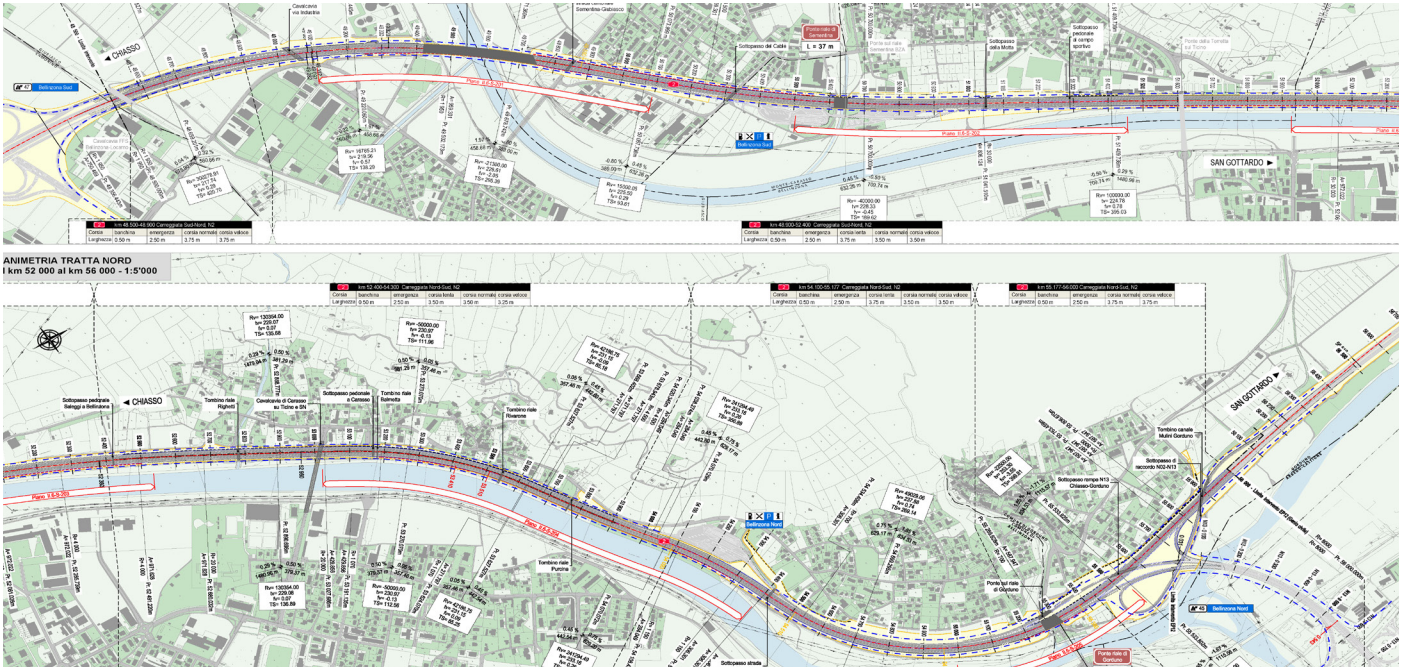


**Project Partners Ltd**  
Consulting Engineers

**Innovating with experience**



## N2 EP12, BELLINZONA – SWITZERLAND



The project concerns the N2 highway section between km 48,500 and km 56,000, including the Bellinzona Nord junction (No2-N13), with rehabilitation of: road superstructure, buildings, water evacuation system, safety barriers and fences, electromechanical installations, signs and noise barriers and construction of 3 new road wastewater treatment plants (SABA). This is a complete rehabilitation project that concerns the FEDRO sectors T/U (environment), K (artefacts) and T/G (tunnel and geotechnics). The services concern those relating to following phases: intervention project (MP), detailed project (DP), contract (S) and execution of the intervention (B), including the resumption of the Intervention Concept (MK).

Client:  
**Federal Roads Office FEDRO,  
Bellinzona**

Cost:  
**125.00 Mio CHF**

Period:  
**2015 – in corso**



[www.ppeng.ch](http://www.ppeng.ch)

