



Project Partners Ltd
Consulting Engineers

Innovating with experience



ROLLE FFS STATION – SWITZERLAND

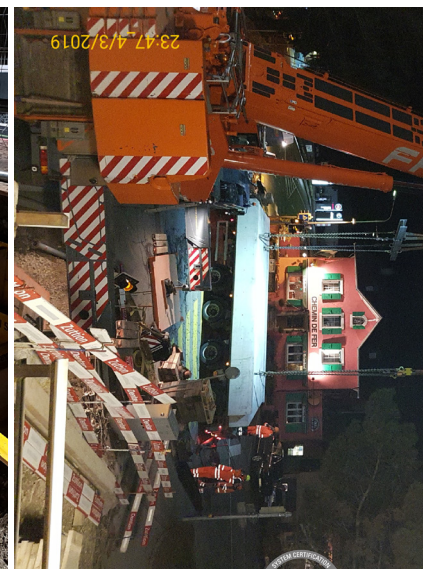


The project concerns the adaptation according to the new law on disabled people (H55) of the Rolle railway station, located between km 26,515 and km 26,860 along line 150 Lausanne – Geneva Airport. As part of the project, various interventions were accomplished, including extension, modification of geometry, widening and raising of existing sidewalks, demolition and construction of new ramps and stairs, construction of a new lift and shelters, construction of new retaining walls and of all necessary railway infrastructures. The works were executed with railway traffic in operation, with some interventions carried out in “coup de poing” and others at night.

Client:
Ferrovie Federali Svizzere
FFS SA, Losanna

Cost:
16.90 Mio CHF

Period:
2015 – 2020



www.ppeng.ch

